

## VICTORIAN ALPINE RESORTS ENTRY STATISTICS WINTER 2018

Week No:

8

Period Ending:

Sunday, 29 July 2018

Visitors	Mt. Baw Baw	Lake Mountain	Mt. Stirling	Mt. Hotham	Falls Creek	Mt. Buller	All Resorts
Visitors for week 2018	5,287	10,271	819	9,602	11,398	29,257	66,634
Visitors for week 2017	4,461	8,573	549	9,981	13,067	27,505	64,136
Visitors for week 2016	5,111	13,312	1,059	7,719	13,303	29,301	69,805
Visitors for week 2015	6,433	10,452	408	6,662	10,026	26,885	60,866
Visitors for week 2014	6,960	14,245	544	8,576	10,427	28,891	69,643
Visitors for week 2013	2,745	9,251	544	7,623	10,625	22,280	53,068
Visitors for week 2012	2,474	4,160	615	10,939	11,038	20,637	49,863
Visitors for week 2011	5,047	8,518	500	11,178	9,532	21,396	56,171
Visitors for week 2010	3,379	6,646	802	10,394	9,268	21,402	51,891
Visitors for week 2009	3,662	6,222	367	12,308	11,070	24,404	58,033
Visitors for week 2008	3,304	11,275	346	7,187	9,819	22,164	54,095
% Change for week 2018/17	19%	20%	49%	-4%	-13%	6%	4%
Visitors YTD 2018	40,154	79,374	4,503	59,472	62,836	198,949	445,288
Visitors YTD 2017	28,390	56,609	2,018	57,183	70,497	178,692	393,389
Visitors YTD 2016	32,602	67,933	3,481	41,643	68,628	171,199	385,486
Visitors YTD 2015	28,662	58,703	1,428	40,422	49,606	134,870	313,691
Visitors YTD 2014	35,509	71,801	2,880	47,637	52,958	141,566	352,351
Visitors YTD 2013	16,159	34,533	1,202	36,611	48,816	111,962	249,283
Visitors YTD 2012	30,258	56,625	1,597	67,637	68,390	125,576	350,083
Visitors YTD 2011	27,226	66,658	2,090	60,140	57,704	138,080	351,898
Visitors YTD 2010	23,952	61,550	2,121	63,612	58,022	142,400	351,657
Visitors YTD 2009	22,282	44,881	1,281	61,433	52,950	135,231	318,058
Visitors YTD 2008	12,367	43,187	816	40,934	46,333	100,193	243,830
% Change for YTD 2018/17	41%	40%	123%	4%	-11%	11%	13%
10 YR PREVIOUS YTD AV VISITORS	25,741	56,248	1,891	51,725	57,390	137,977	330,973
% CHANGE 10 YR YTD AV VISITORS TO 2018 VISITORS	56%	41%	138%	15%	9%	44%	35%

Visitor Days	Mt. Baw Baw	Lake Mountain	Mt. Stirling	Mt. Hotham	Falls Creek	Mt. Buller	All Resorts
Visitor Days for week 2018	7,966	10,271	1,128	24,150	29,814	39,057	112,386
Visitor Days for week 2017	5,799	8,573	702	25,596	29,332	37,535	107,537
Visitor Days for week 2016	6,394	13,312	1,326	19,557	36,692	39,125	116,406
Visitor Days for week 2015	8,600	10,452	558	17,562	25,955	36,714	99,841
Visitor Days for week 2014	9,347	14,245	1,250	21,679	24,565	41,720	112,806
Visitor Days for week 2013	4,688	9,251	643	18,927	25,895	44,582	103,986
Visitor Days for week 2012	4,160	4,160	685	29,665	26,517	39,727	104,914
Visitor Days for week 2011	7,313	8,518	541	28,251	24,461	38,928	108,012
Visitor Days for week 2010	4,576	6,646	851	26,677	22,535	44,023	105,308
Visitor Days for week 2009	4,706	6,222	367	30,237	28,821	47,970	118,323
Visitor Days for week 2008	4,581	11,275	346	21,061	25,531	42,967	105,761
% Change for week 2018/17	37%	20%	61%	-6%	2%	4%	5%
Visitor Days YTD 2018	63,622	79,374	5,478	152,674	167,627	277,322	746,097
Visitor Days YTD 2017	36,896	56,609	2,546	144,417	162,155	253,415	656,038
Visitor Days YTD 2016	39,805	67,933	4,312	119,057	179,082	247,020	657,209
Visitor Days YTD 2015	41,575	58,703	1,761	113,990	124,179	207,713	547,921
Visitor Days YTD 2014	48,000	71,801	4,192	131,845	128,177	227,945	611,960
Visitor Days YTD 2013	33,802	34,533	1,438	105,194	127,847	209,193	512,007
Visitor Days YTD 2012	37,756	56,625	1,878	172,877	166,690	217,540	653,366
Visitor Days YTD 2011	37,906	66,658	2,271	147,291	142,594	238,533	635,253
Visitor Days YTD 2010	30,260	61,550	2,264	162,865	139,868	257,368	654,175
Visitor Days YTD 2009	28,387	44,881	1,281	150,424	144,080	247,308	616,361
Visitor Days YTD 2008	19,464	43,187	816	123,330	121,353	188,992	497,142
% Change for YTD 2018/17	72%	40%	115%	6%	3%	9%	14%
10 YR PREVIOUS YTD AV VISITOR DAYS	35,385	56,248	2,276	137,129	143,603	229,503	604,143
% CHANGE 10 YR PREVIOUS YTD AV VISITOR DAYS TO 2018 VISITOR DAYS	80%	41%	141%	11%	17%	21%	23%

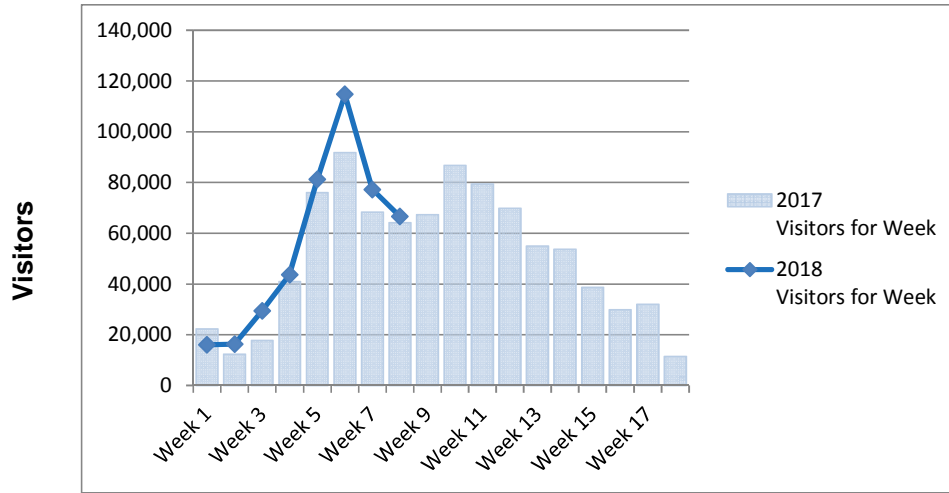
- Data provided by Victorian Alpine Resort Management Boards from gate entry records and estimated season permit holder visitation.
- Season permit holder visitation will be adjusted using survey card returns at the end of the season.
- Collated and published by the Alpine Resorts Co-ordinating Council.



# All Resorts Comparisons - Entry Statistics Winter 2018 - As at Week 8



### Weekly Comparisons - 2018 v 2017



### Year to Date Comparisons - 2018 v Previous 10 years Av

