

## VICTORIAN ALPINE RESORTS ENTRY STATISTICS WINTER 2018

Week No: 7  
 Period Ending: Sunday, 22 July 2018

Visitors	Mt. Baw Baw	Lake Mountain	Mt. Stirling	Mt. Hotham	Falls Creek	Mt. Buller	All Resorts
Visitors for week 2018	5,802	11,605	1,032	10,843	12,474	35,493	77,249
Visitors for week 2017	5,605	9,199	770	9,803	13,168	29,718	68,263
Visitors for week 2016	4,393	7,238	463	7,362	11,691	29,024	60,171
Visitors for week 2015	6,203	14,542	621	9,134	11,533	30,211	72,244
Visitors for week 2014	6,575	15,376	276	9,663	11,203	33,545	76,638
Visitors for week 2013	1,838	3,446	157	6,310	9,683	16,945	38,379
Visitors for week 2012	4,258	4,314	224	12,980	11,621	21,887	55,284
Visitors for week 2011	4,878	8,449	375	10,239	8,731	22,911	55,583
Visitors for week 2010	4,193	9,407	643	10,807	9,796	22,263	57,109
Visitors for week 2009	4,135	5,732	238	13,091	12,294	25,333	60,823
Visitors for week 2008	2,297	9,039	213	11,256	10,483	22,484	55,772
% Change for week 2018/17	4%	26%	34%	11%	-5%	19%	13%
Visitors YTD 2018	34,867	69,103	3,684	49,870	51,438	169,692	378,654
Visitors YTD 2017	23,929	48,036	1,469	47,202	57,430	151,187	329,253
Visitors YTD 2016	27,491	54,621	2,422	33,924	55,325	141,898	315,681
Visitors YTD 2015	22,229	48,251	1,020	33,760	39,580	107,985	252,825
Visitors YTD 2014	28,549	57,556	2,336	39,061	42,531	112,675	282,708
Visitors YTD 2013	13,414	25,282	658	28,988	38,191	89,682	196,215
Visitors YTD 2012	27,784	52,465	982	56,698	57,352	104,939	300,220
Visitors YTD 2011	22,179	58,140	1,590	48,962	48,172	116,684	295,727
Visitors YTD 2010	20,573	54,904	1,319	53,218	48,754	120,998	299,766
Visitors YTD 2009	18,620	38,659	914	49,124	41,880	110,827	260,024
Visitors YTD 2008	9,063	31,912	470	33,746	36,514	78,029	189,734
% Change for YTD 2018/17	46%	44%	151%	6%	-10%	12%	15%
10 YR PREVIOUS YTD AV VISITORS	21,383	46,983	1,318	42,468	46,573	113,490	272,215
% CHANGE 10 YR YTD AV VISITORS TO 2018 VISITORS	63%	47%	180%	17%	10%	50%	39%

Visitor Days	Mt. Baw Baw	Lake Mountain	Mt. Stirling	Mt. Hotham	Falls Creek	Mt. Buller	All Resorts
Visitor Days for week 2018	8,803	11,605	1,269	25,157	31,768	46,230	124,832
Visitor Days for week 2017	7,286	9,199	962	23,812	30,541	40,050	111,850
Visitor Days for week 2016	5,267	7,238	694	20,774	30,873	37,928	102,774
Visitor Days for week 2015	8,219	14,542	714	22,620	27,566	38,873	112,534
Visitor Days for week 2014	8,832	15,376	684	26,465	28,149	45,788	125,294
Visitor Days for week 2013	3,572	3,446	186	18,005	25,460	28,781	79,450
Visitor Days for week 2012	5,277	4,314	260	27,085	29,823	34,966	101,725
Visitor Days for week 2011	6,473	8,449	380	23,577	17,707	38,931	95,517
Visitor Days for week 2010	5,178	9,407	703	28,744	22,510	38,403	104,945
Visitor Days for week 2009	5,572	5,732	238	30,070	32,930	41,825	116,367
Visitor Days for week 2008	3,478	9,039	213	31,435	24,919	37,397	106,481
% Change for week 2018/17	21%	26%	32%	6%	4%	15%	12%
Visitor Days YTD 2018	55,656	69,103	4,350	128,524	137,813	238,265	633,711
Visitor Days YTD 2017	31,098	48,036	1,844	118,821	132,823	215,880	548,502
Visitor Days YTD 2016	33,411	54,621	2,986	99,500	142,390	207,895	540,803
Visitor Days YTD 2015	32,975	48,251	1,203	96,428	98,224	170,999	448,080
Visitor Days YTD 2014	38,653	57,556	2,942	110,166	103,612	186,225	499,154
Visitor Days YTD 2013	29,114	25,282	795	86,267	101,952	164,611	408,021
Visitor Days YTD 2012	33,596	52,465	1,193	143,212	140,173	177,813	548,452
Visitor Days YTD 2011	30,593	58,140	1,730	119,040	118,133	199,605	527,241
Visitor Days YTD 2010	25,684	54,904	1,413	136,188	117,333	213,345	548,867
Visitor Days YTD 2009	23,681	38,659	914	120,187	115,259	199,338	498,038
Visitor Days YTD 2008	14,883	31,912	470	102,269	95,822	146,025	391,381
% Change for YTD 2018/17	79%	44%	136%	8%	4%	10%	16%
10 YR PREVIOUS YTD AV VISITOR DAYS	29,369	46,983	1,549	113,208	116,572	188,174	495,854
% CHANGE 10 YR PREVIOUS YTD AV VISITOR DAYS TO 2018 VISITOR DAYS	90%	47%	181%	14%	18%	27%	28%

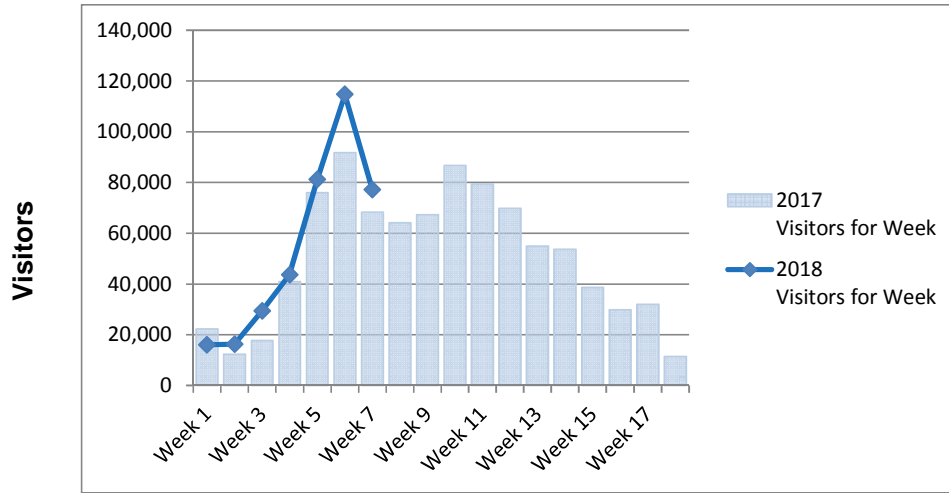
- Data provided by Victorian Alpine Resort Management Boards from gate entry records and estimated season permit holder visitation.
- Season permit holder visitation will be adjusted using survey card returns at the end of the season.
- Collated and published by the Alpine Resorts Co-ordinating Council.



# All Resorts Comparisons - Entry Statistics Winter 2018 - As at Week 7



### Weekly Comparisons - 2018 v 2017



### Year to Date Comparisons - 2018 v Previous 10 years Av

