

VICTORIAN ALPINE RESORTS ENTRY STATISTICS WINTER 2018

Week No: **4**
 Period Ending: **Sunday, 1 July 2018**

Visitors	Mt. Baw Baw	Lake Mountain	Mt. Stirling	Mt. Hotham	Falls Creek	Mt. Buller	All Resorts
Visitors for week 2018	4,065	7,324	438	6,726	5,797	19,327	43,677
Visitors for week 2017	2,682	5,708	117	6,156	6,414	19,850	40,927
Visitors for week 2016	6,484	15,146	450	5,450	8,770	24,624	60,924
Visitors for week 2015	1,917	2,349	24	3,376	3,794	10,813	22,273
Visitors for week 2014	2,027	2,878	132	3,782	3,370	9,484	21,673
Visitors for week 2013	1,273	2,237	69	4,033	3,953	11,037	22,602
Visitors for week 2012	3,952	4,072	90	6,560	7,256	13,607	35,537
Visitors for week 2011	1,103	3,698	127	5,510	5,269	14,076	29,783
Visitors for week 2010	4,580	10,944	270	8,902	8,826	20,824	54,346
Visitors for week 2009	1,203	1,647	67	4,777	3,353	12,058	23,105
Visitors for week 2008	354	1,209	0	1,780	2,574	4,234	10,151
% Change for week 2018/17	52%	28%	274%	9%	-10%	-3%	7%
Visitors YTD 2018	10,623	17,760	978	13,738	12,498	49,839	105,436
Visitors YTD 2017	6,700	12,288	261	12,825	13,765	47,436	93,275
Visitors YTD 2016	10,591	21,623	678	9,984	15,229	42,860	100,965
Visitors YTD 2015	5,989	9,943	150	7,723	9,635	27,829	61,269
Visitors YTD 2014	3,911	4,543	249	6,690	5,713	14,885	35,991
Visitors YTD 2013	4,712	5,725	232	7,924	8,296	24,424	51,313
Visitors YTD 2012	10,018	10,529	205	17,094	16,744	28,641	83,231
Visitors YTD 2011	7,181	17,885	367	13,543	14,097	40,703	93,776
Visitors YTD 2010	7,214	19,730	311	17,495	15,854	46,702	107,306
Visitors YTD 2009	4,237	11,188	132	12,062	9,388	29,098	66,105
Visitors YTD 2008	1,318	5,860	0	4,748	6,507	11,483	29,916
% Change for YTD 2018/17	59%	45%	275%	7%	-9%	5%	13%
10 YR PREVIOUS YTD AV VISITORS	6,187	11,931	259	11,009	11,523	31,406	72,315
% CHANGE 10 YR YTD AV VISITORS TO 2018 VISITORS	72%	49%	278%	25%	8%	59%	46%

Visitor Days	Mt. Baw Baw	Lake Mountain	Mt. Stirling	Mt. Hotham	Falls Creek	Mt. Buller	All Resorts
Visitor Days for week 2018	7,058	7,324	474	17,524	16,200	27,761	76,341
Visitor Days for week 2017	3,486	5,708	132	17,281	16,182	26,972	69,761
Visitor Days for week 2016	8,796	15,146	480	17,433	23,077	37,586	102,518
Visitor Days for week 2015	2,751	2,349	27	13,197	11,758	18,766	48,848
Visitor Days for week 2014	2,976	2,878	165	9,680	9,544	18,831	44,074
Visitor Days for week 2013	3,032	2,237	96	11,888	11,845	19,848	48,946
Visitor Days for week 2012	4,861	4,072	105	18,592	20,515	25,971	71,855
Visitor Days for week 2011	1,763	3,698	142	13,133	13,103	26,406	58,245
Visitor Days for week 2010	5,887	10,944	270	26,175	22,872	39,221	105,369
Visitor Days for week 2009	1,509	1,647	67	12,374	10,329	24,578	50,504
Visitor Days for week 2008	1,019	1,209	0	6,774	8,884	14,101	31,987
% Change for week 2018/17	102%	28%	259%	1%	0%	3%	9%
Visitor Days YTD 2018	17,681	17,760	1,185	34,195	32,793	71,372	174,986
Visitor Days YTD 2017	8,699	12,288	333	31,969	33,357	67,973	154,619
Visitor Days YTD 2016	13,554	21,623	741	32,251	39,390	68,858	176,417
Visitor Days YTD 2015	9,739	9,943	180	23,596	25,815	47,618	116,891
Visitor Days YTD 2014	5,328	4,543	297	17,408	15,860	31,527	74,963
Visitor Days YTD 2013	9,231	5,725	277	21,993	23,985	45,611	106,822
Visitor Days YTD 2012	11,504	10,529	244	41,557	41,580	50,240	155,654
Visitor Days YTD 2011	9,893	17,885	395	27,589	33,095	68,700	157,557
Visitor Days YTD 2010	9,133	19,730	311	47,345	40,130	81,750	198,399
Visitor Days YTD 2009	5,267	11,188	132	26,694	25,346	54,124	122,751
Visitor Days YTD 2008	2,518	5,860	0	15,701	20,003	32,718	76,800
% Change for YTD 2018/17	103%	45%	256%	7%	-2%	5%	13%
10 YR PREVIOUS YTD AV VISITOR DAYS	8,487	11,931	291	28,610	29,856	54,912	134,087
% CHANGE 10 YR PREVIOUS YTD AV VISITOR DAYS TO 2018 VISITOR DAYS	108%	49%	307%	20%	10%	30%	31%

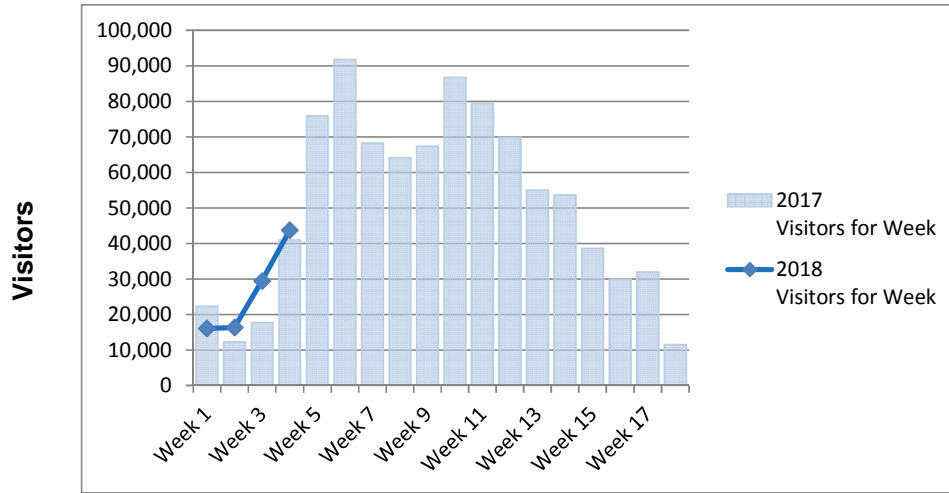
• Data provided by Victorian Alpine Resort Management Boards from gate entry records and estimated season permit holder visitation.
 • Season permit holder visitation will be adjusted using survey card returns at the end of the season.
 • Collated and published by the Alpine Resorts Co-ordinating Council.



All Resorts Comparisons - Entry Statistics Winter 2018 - As at Week 4



Weekly Comparisons - 2018 v 2017



Year to Date Comparisons - 2018 v Previous 10 years Av

