

## VICTORIAN ALPINE RESORTS ENTRY STATISTICS WINTER 2018

Week No: **3**  
 Period Ending: **Sunday, 24 June 2018**

Visitors	Mt. Baw Baw	Lake Mountain	Mt. Stirling	Mt. Hotham	Falls Creek	Mt. Buller	All Resorts
Visitors for week 2018	2,986	5,106	294	3,231	3,433	14,344	29,394
Visitors for week 2017	651	2,020	57	2,470	2,870	9,686	17,754
Visitors for week 2016	2,106	4,033	165	1,960	3,919	10,263	22,446
Visitors for week 2015	1,382	1,435	42	1,438	2,081	4,143	10,521
Visitors for week 2014	836	607	24	1,121	746	1,360	4,694
Visitors for week 2013	1,069	1,341	103	1,540	1,753	6,059	11,865
Visitors for week 2012	1,980	2,460	53	4,993	3,581	6,368	19,435
Visitors for week 2011	1,724	3,812	50	4,468	3,339	9,302	22,695
Visitors for week 2010	898	1,605	32	3,738	2,944	8,656	17,873
Visitors for week 2009	1,697	3,455	38	2,844	2,577	7,742	18,353
Visitors for week 2008	351	876	0	806	1,465	2,205	5,703
% Change for week 2018/17	359%	153%	416%	31%	20%	48%	66%
Visitors YTD 2018	6,558	10,436	540	7,012	6,701	30,512	61,759
Visitors YTD 2017	4,018	6,580	144	6,669	7,351	27,586	52,348
Visitors YTD 2016	4,107	6,477	228	4,534	6,459	18,236	40,041
Visitors YTD 2015	5,453	7,594	126	4,347	5,841	17,016	40,377
Visitors YTD 2014	1,884	1,665	117	2,908	2,343	5,401	14,318
Visitors YTD 2013	3,439	3,488	163	3,891	4,343	13,387	28,711
Visitors YTD 2012	6,066	6,457	115	10,534	9,488	15,034	47,694
Visitors YTD 2011	6,078	14,187	240	8,033	8,828	26,627	63,993
Visitors YTD 2010	2,634	8,786	41	8,593	7,028	25,878	52,960
Visitors YTD 2009	3,034	9,541	65	7,286	6,035	17,040	43,001
Visitors YTD 2008	964	4,651	0	2,968	3,933	7,249	19,765
% Change for YTD 2018/17	63%	59%	275%	5%	-9%	11%	18%
10 YR PREVIOUS YTD AV VISITORS	3,768	6,943	124	5,976	6,165	17,345	40,321
% CHANGE 10 YR YTD AV VISITORS TO 2018 VISITORS	74%	50%	336%	17%	9%	76%	53%

Visitor Days	Mt. Baw Baw	Lake Mountain	Mt. Stirling	Mt. Hotham	Falls Creek	Mt. Buller	All Resorts
Visitor Days for week 2018	5,768	5,106	339	6,911	8,450	19,293	45,867
Visitor Days for week 2017	846	2,020	72	5,756	7,935	13,836	30,465
Visitor Days for week 2016	2,306	4,033	186	8,368	10,297	17,606	42,796
Visitor Days for week 2015	1,745	1,435	51	3,605	5,965	6,648	19,449
Visitor Days for week 2014	993	607	30	2,992	2,101	2,413	9,136
Visitor Days for week 2013	2,290	1,341	106	3,914	5,416	10,112	23,179
Visitor Days for week 2012	2,246	2,460	68	10,743	9,350	10,503	35,371
Visitor Days for week 2011	2,161	3,812	53	6,620	8,948	14,951	36,545
Visitor Days for week 2010	1,198	1,605	32	10,651	7,995	14,903	36,384
Visitor Days for week 2009	1,921	3,455	38	6,472	7,330	12,040	31,256
Visitor Days for week 2008	686	876	0	2,761	4,901	6,793	16,017
% Change for week 2018/17	582%	153%	371%	20%	6%	39%	51%
Visitor Days YTD 2018	10,623	10,436	711	16,671	16,593	43,611	98,645
Visitor Days YTD 2017	5,213	6,580	201	14,688	17,175	41,001	84,858
Visitor Days YTD 2016	4,758	6,477	261	14,818	16,313	31,272	73,899
Visitor Days YTD 2015	6,988	7,594	153	10,399	14,057	28,852	68,043
Visitor Days YTD 2014	2,352	1,665	132	7,728	6,316	12,696	30,889
Visitor Days YTD 2013	6,199	3,488	181	10,105	12,140	25,763	57,876
Visitor Days YTD 2012	6,643	6,457	139	22,965	21,065	24,269	81,538
Visitor Days YTD 2011	8,130	14,187	253	14,456	19,992	42,294	99,312
Visitor Days YTD 2010	3,246	8,786	41	21,170	17,258	42,529	93,030
Visitor Days YTD 2009	3,758	9,541	65	14,320	15,017	29,546	72,247
Visitor Days YTD 2008	1,499	4,651	0	8,927	11,119	18,617	44,813
% Change for YTD 2018/17	104%	59%	254%	14%	-3%	6%	16%
10 YR PREVIOUS YTD AV VISITOR DAYS	4,879	6,943	143	13,958	15,045	29,684	70,651
% CHANGE 10 YR PREVIOUS YTD AV VISITOR DAYS TO 2018 VISITOR DAYS	118%	50%	399%	19%	10%	47%	40%

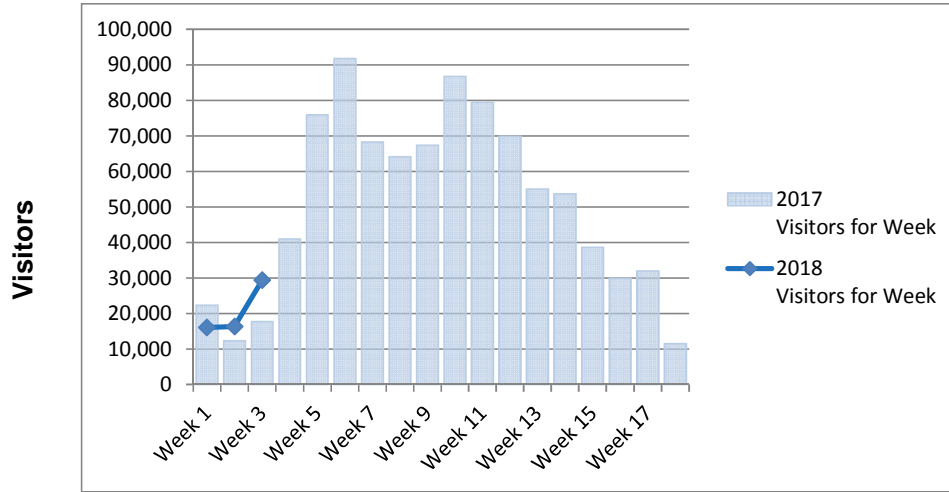
- Data provided by Victorian Alpine Resort Management Boards from gate entry records and estimated season permit holder visitation.
- Season permit holder visitation will be adjusted using survey card returns at the end of the season.
- Collated and published by the Alpine Resorts Co-ordinating Council.



# All Resorts Comparisons - Entry Statistics Winter 2018 - As at Week 3



### Weekly Comparisons - 2018 v 2017



### Year to Date Comparisons - 2018 v Previous 10 years Av

