

VICTORIAN ALPINE RESORTS ENTRY STATISTICS WINTER 2018

Week No: 15
 Period Ending: Sunday, 16 September 2018

Visitors	Mt. Baw Baw	Lake Mountain	Mt. Stirling	Mt. Hotham	Falls Creek	Mt. Buller	All Resorts
Visitors for week 2018	2,051	2,533	219	5,624	6,712	13,586	30,725
Visitors for week 2017	2,623	4,599	345	6,004	8,475	16,595	38,641
Visitors for week 2016	0	923	48	3,294	6,541	4,668	15,474
Visitors for week 2015	1,812	1,473	159	4,801	6,382	11,045	25,672
Visitors for week 2014	0	748	57	4,194	5,630	7,182	17,811
Visitors for week 2013	1,042	0	81	3,092	5,360	4,399	13,974
Visitors for week 2012	1,473	2,100	150	6,203	6,137	11,193	27,256
Visitors for week 2011	0	1,429	51	3,784	3,562	4,319	13,145
Visitors for week 2010	1,710	4,006	163	7,021	7,259	10,761	30,920
Visitors for week 2009	322	0	124	6,265	7,164	7,769	21,644
Visitors for week 2008	2,760	4,406	205	5,425	6,521	12,048	31,365
% Change for week 2018/17	-22%	-45%	-37%	-6%	-21%	-18%	-20%
Visitors YTD 2018	72,433	140,285	10,713	133,830	145,756	389,475	892,492
Visitors YTD 2017	55,703	120,533	7,477	130,590	168,190	361,634	844,127
Visitors YTD 2016	49,775	100,104	6,025	98,076	156,673	314,835	725,488
Visitors YTD 2015	66,035	120,913	5,964	112,132	129,723	293,536	728,303
Visitors YTD 2014	67,234	131,509	7,251	117,673	131,697	308,362	763,726
Visitors YTD 2013	33,057	72,547	5,253	96,103	122,051	251,464	580,475
Visitors YTD 2012	53,775	106,318	5,016	143,864	142,188	261,714	712,875
Visitors YTD 2011	37,097	81,924	4,463	125,874	124,610	237,773	611,741
Visitors YTD 2010	50,905	129,043	8,101	139,512	130,062	281,476	739,099
Visitors YTD 2009	39,075	61,844	4,603	145,092	126,750	270,360	647,724
Visitors YTD 2008	40,324	116,944	5,750	103,521	123,980	253,871	644,390
% Change for YTD 2018/17	30%	16%	43%	2%	-13%	8%	6%
10 YR PREVIOUS YTD AV VISITORS	49,298	104,168	5,990	121,244	135,592	283,503	699,795
% CHANGE 10 YR YTD AV VISITORS TO 2018 VISITORS	47%	35%	79%	10%	7%	37%	28%

Visitor Days	Mt. Baw Baw	Lake Mountain	Mt. Stirling	Mt. Hotham	Falls Creek	Mt. Buller	All Resorts
Visitor Days for week 2018	4,064	2,533	258	15,320	19,085	20,104	61,364
Visitor Days for week 2017	3,409	4,599	408	14,990	21,846	24,402	69,654
Visitor Days for week 2016	0	923	87	10,134	19,696	7,411	38,251
Visitor Days for week 2015	2,247	1,473	249	12,005	18,548	21,892	56,414
Visitor Days for week 2014	0	748	66	11,117	15,869	11,881	39,681
Visitor Days for week 2013	1,146	0	96	8,736	15,247	8,642	33,867
Visitor Days for week 2012	2,774	2,100	282	15,715	15,955	17,966	55,212
Visitor Days for week 2011	0	1,429	52	11,924	11,660	7,818	32,883
Visitor Days for week 2010	2,102	4,006	173	21,227	18,839	18,653	65,000
Visitor Days for week 2009	679	0	124	14,174	21,132	13,305	49,414
Visitor Days for week 2008	3,645	4,406	205	15,403	17,646	20,271	61,576
% Change for week 2018/17	19%	-45%	-37%	2%	-13%	-18%	-12%
Visitor Days YTD 2018	113,649	140,285	13,552	355,569	401,457	545,856	1,570,368
Visitor Days YTD 2017	72,404	120,533	9,755	338,450	402,363	521,093	1,464,598
Visitor Days YTD 2016	61,335	100,104	8,413	278,971	426,437	452,710	1,327,970
Visitor Days YTD 2015	93,760	120,913	7,536	307,001	345,207	454,402	1,328,819
Visitor Days YTD 2014	93,441	131,509	9,729	320,484	331,074	487,787	1,374,024
Visitor Days YTD 2013	60,872	72,547	6,774	264,674	321,446	458,415	1,184,728
Visitor Days YTD 2012	74,040	106,318	6,899	377,241	359,582	458,902	1,382,982
Visitor Days YTD 2011	52,347	81,924	5,295	317,763	324,486	423,492	1,205,307
Visitor Days YTD 2010	64,923	129,043	9,205	359,745	318,452	504,620	1,385,988
Visitor Days YTD 2009	52,952	61,844	5,425	354,714	350,824	488,393	1,314,152
Visitor Days YTD 2008	58,152	116,944	5,750	302,779	321,097	453,641	1,258,363
% Change for YTD 2018/17	57%	16%	39%	5%	0%	5%	7%
10 YR PREVIOUS YTD AV VISITOR DAYS	68,423	104,168	7,478	322,182	350,097	470,346	1,322,693
% CHANGE 10 YR PREVIOUS YTD AV VISITOR DAYS TO 2018 VISITOR DAYS	66%	35%	81%	10%	15%	16%	19%

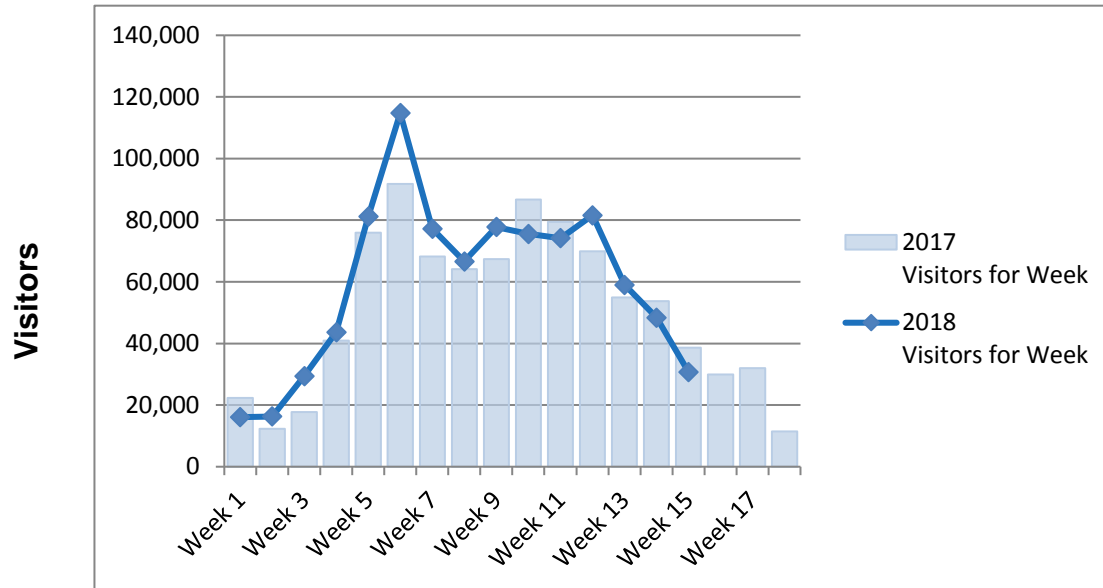
- Data provided by Victorian Alpine Resort Management Boards from gate entry records and estimated season permit holder visitation.
- Season permit holder visitation will be adjusted using survey card returns at the end of the season.
- Collated and published by the Alpine Resorts Co-ordinating Council.



All Resorts Comparisons - Entry Statistics Winter 2018 - As at Week 15



Weekly Comparisons - 2018 v 2017



Year to Date Comparisons - 2018 v Previous 10 years Av

