

# VICTORIAN ALPINE RESORTS ENTRY STATISTICS WINTER 2018

Week No: 1  
 Period Ending: Sunday, 10 June 2018

Visitors	Mt. Baw Baw	Lake Mountain	Mt. Stirling	Mt. Hotham	Falls Creek	Mt. Buller	All Resorts
Visitors for week 2018	2,251	2,769	129	2,156	1,835	6,940	16,080
Visitors for week 2017	2,753	3,252	57	2,663	2,773	10,784	22,282
Visitors for week 2016	891	1,866	27	1,703	1,653	4,356	10,496
Visitors for week 2015	2,206	4,723	30	2,043	2,324	8,055	19,381
Visitors for week 2014	272	614	57	1,197	1,063	2,928	6,131
Visitors for week 2013	1,556	1,547	21	1,551	1,687	4,563	10,925
Visitors for week 2012	2,069	3,236	44	3,592	3,898	5,422	18,261
Visitors for week 2011	2,062	8,305	164	2,350	3,541	9,674	26,096
Visitors for week 2010	973	5,981	0	2,803	2,324	10,495	22,576
Visitors for week 2009	257	1,889	0	2,074	1,648	3,430	9,298
Visitors for week 2008	316	1,672	0	1,356	1,601	3,250	8,195
% Change for week 2018/17	-18%	-15%	126%	-19%	-34%	-36%	-28%
Visitors YTD 2018	2,251	2,769	129	2,156	1,835	6,940	16,080
Visitors YTD 2017	2,753	3,252	57	2,663	2,773	10,784	22,282
Visitors YTD 2016	891	1,866	27	1,703	1,653	4,356	10,496
Visitors YTD 2015	2,206	4,723	30	2,043	2,324	8,055	19,381
Visitors YTD 2014	272	614	57	1,197	1,063	2,928	6,131
Visitors YTD 2013	1,556	1,547	21	1,551	1,687	4,563	10,925
Visitors YTD 2012	2,069	3,236	44	3,592	3,898	5,422	18,261
Visitors YTD 2011	2,062	8,305	164	2,350	3,541	9,674	26,096
Visitors YTD 2010	973	5,981	0	2,803	2,324	10,495	22,576
Visitors YTD 2009	257	1,889	0	2,074	1,648	3,430	9,298
Visitors YTD 2008	316	1,672	0	1,356	1,601	3,250	8,195
% Change for YTD 2018/17	-18%	-15%	126%	-19%	-34%	-36%	-28%
10 YR PREVIOUS YTD AV VISITORS	1,336	3,309	40	2,133	2,251	6,296	15,364
% CHANGE 10 YR YTD AV VISITORS TO 2018 VISITORS	69%	-16%	223%	1%	-18%	10%	5%

Visitor Days	Mt. Baw Baw	Lake Mountain	Mt. Stirling	Mt. Hotham	Falls Creek	Mt. Buller	All Resorts
Visitor Days for week 2018	2,753	2,769	192	6,271	4,735	13,279	29,999
Visitor Days for week 2017	3,569	3,252	96	6,288	5,663	18,142	37,010
Visitor Days for week 2016	1,154	1,866	39	4,590	3,840	8,368	19,857
Visitor Days for week 2015	3,185	4,723	39	4,997	4,799	15,612	33,355
Visitor Days for week 2014	555	614	60	3,483	2,790	8,296	15,798
Visitor Days for week 2013	1,720	1,547	24	3,883	4,192	11,005	22,371
Visitor Days for week 2012	2,261	3,236	50	7,771	7,787	8,921	30,019
Visitor Days for week 2011	3,015	8,305	169	5,239	6,729	16,362	39,819
Visitor Days for week 2010	1,180	5,981	0	5,443	5,019	17,691	35,314
Visitor Days for week 2009	621	1,889	0	4,200	4,463	8,643	19,816
Visitor Days for week 2008	451	1,672	0	4,204	4,014	8,933	19,274
% Change for week 2018/17	-23%	-15%	100%	0%	-16%	-27%	-19%
Visitor Days YTD 2018	2,753	2,769	192	6,271	4,735	13,279	29,999
Visitor Days YTD 2017	3,569	3,252	96	6,288	5,663	18,142	37,010
Visitor Days YTD 2016	1,154	1,866	39	4,590	3,840	8,368	19,857
Visitor Days YTD 2015	3,185	4,723	39	4,997	4,799	15,612	33,355
Visitor Days YTD 2014	555	614	60	3,483	2,790	8,296	15,798
Visitor Days YTD 2013	1,720	1,547	24	3,883	4,192	11,005	22,371
Visitor Days YTD 2012	2,261	3,236	50	7,771	7,787	8,921	30,026
Visitor Days YTD 2011	3,015	8,305	169	5,239	6,729	16,362	39,819
Visitor Days YTD 2010	1,180	5,981	0	5,443	5,019	17,691	35,314
Visitor Days YTD 2009	621	1,889	0	4,200	4,463	8,643	19,816
Visitor Days YTD 2008	451	1,672	0	4,204	4,014	8,933	19,274
% Change for YTD 2018/17	-23%	-15%	100%	0%	-16%	-27%	-19%
10 YR PREVIOUS YTD AV VISITOR DAYS	1,771	3,309	48	5,010	4,930	12,197	27,264
% CHANGE 10 YR PREVIOUS YTD AV VISITOR DAYS TO 2018 VISITOR DAYS	55%	-16%	303%	25%	-4%	9%	10%

• Data provided by Victorian Alpine Resort Management Boards from gate entry records and estimated season permit holder visitation.  
 • Season permit holder visitation will be adjusted using survey card returns at the end of the season.  
 • Collated and published by the Alpine Resorts Co-ordinating Council.



## VICTORIAN ALPINE RESORTS ENTRY STATISTICS WINTER 2018

Week No:

2

Period Ending:

Sunday, 17 June 2018

Visitors	Mt. Baw Baw	Lake Mountain	Mt. Stirling	Mt. Hotham	Falls Creek	Mt. Buller	All Resorts
Visitors for week 2018	1,321	2,561	117	1,625	1,433	9,228	16,285
Visitors for week 2017	614	1,308	30	1,536	1,708	7,116	12,312
Visitors for week 2016	1,110	578	36	871	887	3,617	7,099
Visitors for week 2015	1,865	1,436	54	866	1,436	4,818	10,475
Visitors for week 2014	776	444	36	590	534	1,113	3,493
Visitors for week 2013	814	600	39	800	903	2,765	5,921
Visitors for week 2012	2,017	761	18	1,949	2,009	3,244	9,998
Visitors for week 2011	2,292	2,070	26	1,215	1,948	7,651	15,202
Visitors for week 2010	763	1,200	9	2,052	1,760	6,727	12,511
Visitors for week 2009	1,080	4,197	27	2,368	1,810	5,868	15,350
Visitors for week 2008	297	2,103	0	806	867	1,794	5,867
% Change for week 2018/17	115%	96%	290%	6%	-16%	30%	32%
Visitors YTD 2018	3,572	5,330	246	3,781	3,268	16,168	32,365
Visitors YTD 2017	3,367	4,560	87	4,199	4,481	17,900	34,594
Visitors YTD 2016	2,001	2,444	63	2,574	2,540	7,973	17,595
Visitors YTD 2015	4,071	6,159	84	2,909	3,760	12,873	29,856
Visitors YTD 2014	1,048	1,058	93	1,787	1,597	4,041	9,624
Visitors YTD 2013	2,370	2,147	60	2,351	2,590	7,328	16,846
Visitors YTD 2012	4,086	3,997	62	5,541	5,907	8,666	28,259
Visitors YTD 2011	4,354	10,375	190	3,565	5,489	17,325	41,298
Visitors YTD 2010	1,736	7,181	9	4,855	4,084	17,222	35,087
Visitors YTD 2009	1,337	6,086	27	4,442	3,458	9,298	24,648
Visitors YTD 2008	613	3,775	0	2,162	2,468	5,044	14,062
% Change for YTD 2018/17	6%	17%	183%	-10%	-27%	-10%	-6%
10 YR PREVIOUS YTD AV VISITORS	2,498	4,778	68	3,439	3,637	10,767	25,187
% CHANGE 10 YR YTD AV VISITORS TO 2018 VISITORS	43%	12%	264%	10%	-10%	50%	28%

Visitor Days	Mt. Baw Baw	Lake Mountain	Mt. Stirling	Mt. Hotham	Falls Creek	Mt. Buller	All Resorts
Visitor Days for week 2018	2,102	2,561	180	3,489	3,408	11,039	22,779
Visitor Days for week 2017	798	1,308	33	2,644	3,577	9,023	17,383
Visitor Days for week 2016	1,298	578	36	1,860	2,176	5,298	11,246
Visitor Days for week 2015	2,058	1,436	63	1,797	3,293	6,592	15,239
Visitor Days for week 2014	804	444	42	1,253	1,425	1,987	5,955
Visitor Days for week 2013	2,189	600	51	2,308	2,532	4,646	12,326
Visitor Days for week 2012	2,136	761	21	4,451	3,928	4,845	16,142
Visitor Days for week 2011	2,954	2,070	31	2,597	4,315	10,981	22,948
Visitor Days for week 2010	868	1,200	9	5,076	4,244	9,935	21,332
Visitor Days for week 2009	1,216	4,197	27	3,649	3,224	8,863	21,176
Visitor Days for week 2008	362	2,103	0	1,962	2,204	2,891	9,522
% Change for week 2018/17	163%	96%	445%	32%	-5%	22%	31%
Visitor Days YTD 2018	4,855	5,330	372	9,760	8,143	24,318	52,778
Visitor Days YTD 2017	4,367	4,560	129	8,932	9,240	27,165	54,393
Visitor Days YTD 2016	2,452	2,444	75	6,450	6,016	13,666	31,103
Visitor Days YTD 2015	5,243	6,159	102	6,794	8,092	22,204	48,594
Visitor Days YTD 2014	1,359	1,058	102	4,736	4,215	10,283	21,753
Visitor Days YTD 2013	3,909	2,147	75	6,191	6,724	15,651	34,697
Visitor Days YTD 2012	4,397	3,997	71	12,222	11,715	13,766	46,168
Visitor Days YTD 2011	5,969	10,375	200	7,836	11,044	27,343	62,767
Visitor Days YTD 2010	2,048	7,181	9	10,519	9,263	27,626	56,646
Visitor Days YTD 2009	1,837	6,086	27	7,849	7,687	17,506	40,992
Visitor Days YTD 2008	813	3,775	0	6,166	6,218	11,824	28,796
% Change for YTD 2018/17	11%	17%	188%	9%	-12%	-10%	-3%
10 YR PREVIOUS YTD AV VISITOR DAYS	3,239	4,778	79	7,770	8,021	18,703	42,591
% CHANGE 10 YR PREVIOUS YTD AV VISITOR DAYS TO 2018 VISITOR DAYS	50%	12%	371%	26%	2%	30%	24%

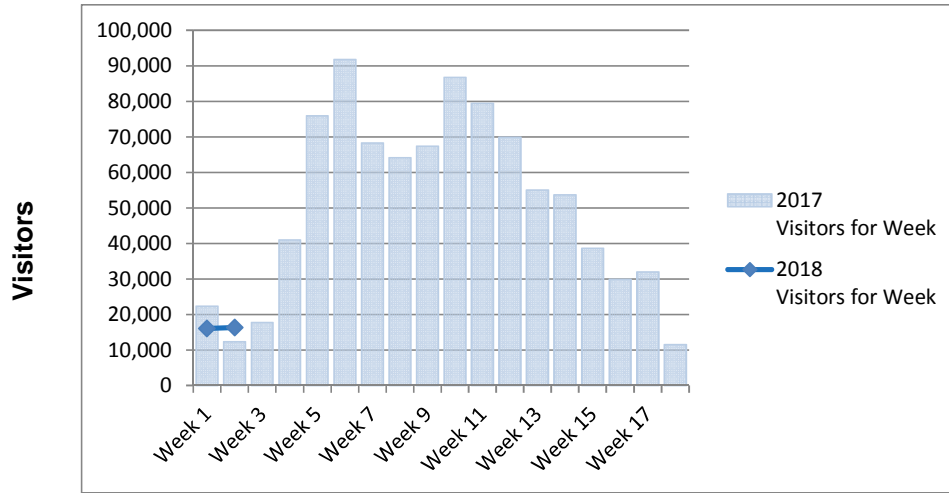
- Data provided by Victorian Alpine Resort Management Boards from gate entry records and estimated season permit holder visitation.
- Season permit holder visitation will be adjusted using survey card returns at the end of the season.
- Collated and published by the Alpine Resorts Co-ordinating Council.



# All Resorts Comparisons - Entry Statistics Winter 2018 - As at Week 1 & 2



### Weekly Comparisons - 2018 v 2017



### Year to Date Comparisons - 2018 v Previous 10 years Av

